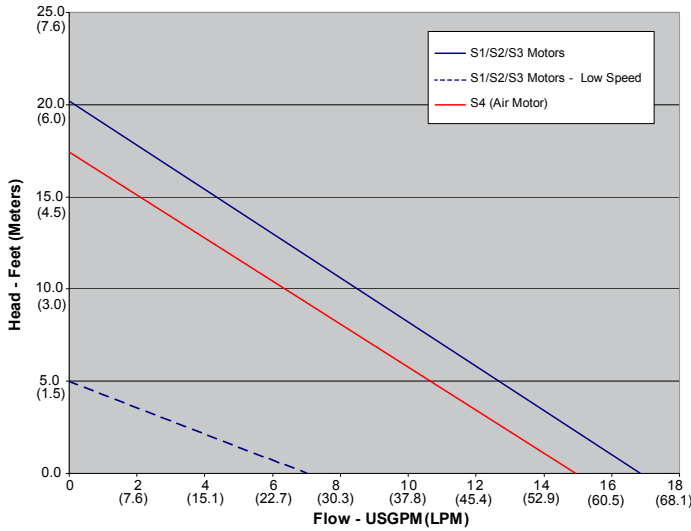


# EF Series

DRUM / BARREL PUMPS

## Performance



Viscosity	100 cP	200 cP	300 cP
Max. Flow	7 gpm   27 lpm	5 gpm   19 lpm	3.7 gpm   14 lpm
Max. Head	16 feet (4.9 m)		

Note: All testing was performed with water at 68°F. Actual performance can vary by +/- 10%. Actual performance will decrease with increased fluid viscosity and specific gravity. Viscosity and performance are based on electric motor at high speed.



Medium performance, light viscosity sealless drum/barrel pumps for container-to-container transfer of acids, corrosives and chemicals.

## FEATURES

- Sealless
- Polypropylene, pure PP/PVDF or 316SS tubes
- Dual speed adjustable motors
- Interchangeable motors and tubes
- Lightweight
- Economical
- Built-in hose and cord clips - EFP and EFV only



## PERFORMANCE

- 1.2 SG
- 300 cP maximum
- Max. temperatures: EFP – 150°F (66° C)  
EFV – 160°F (71° C)  
EFS – 212°F (100° C)

ELECTRIC – 50/60 HZ	AIR
• 17 gpm (64.4 lpm)	• 15 gpm (56.8 lpm)
• 20 feet TDH (6.1 m)	• 17 feet TDH (5.2 m)

## Tube Specifications

Model	Tube Material	Tube Sizes				Seal	Shaft	Internals	Hose Size	
		Diameter		Length					in	mm
		in	mm	in	cm					
EFP	Polypropylene	1 1/4	31.8	16	41	Sealless	316 SS	FKM, PTFE, PP	3/4	20
EFV	Pure PP/PVDF			27	69		Alloy 625			
EFS	316SS			40	102		316 SS			

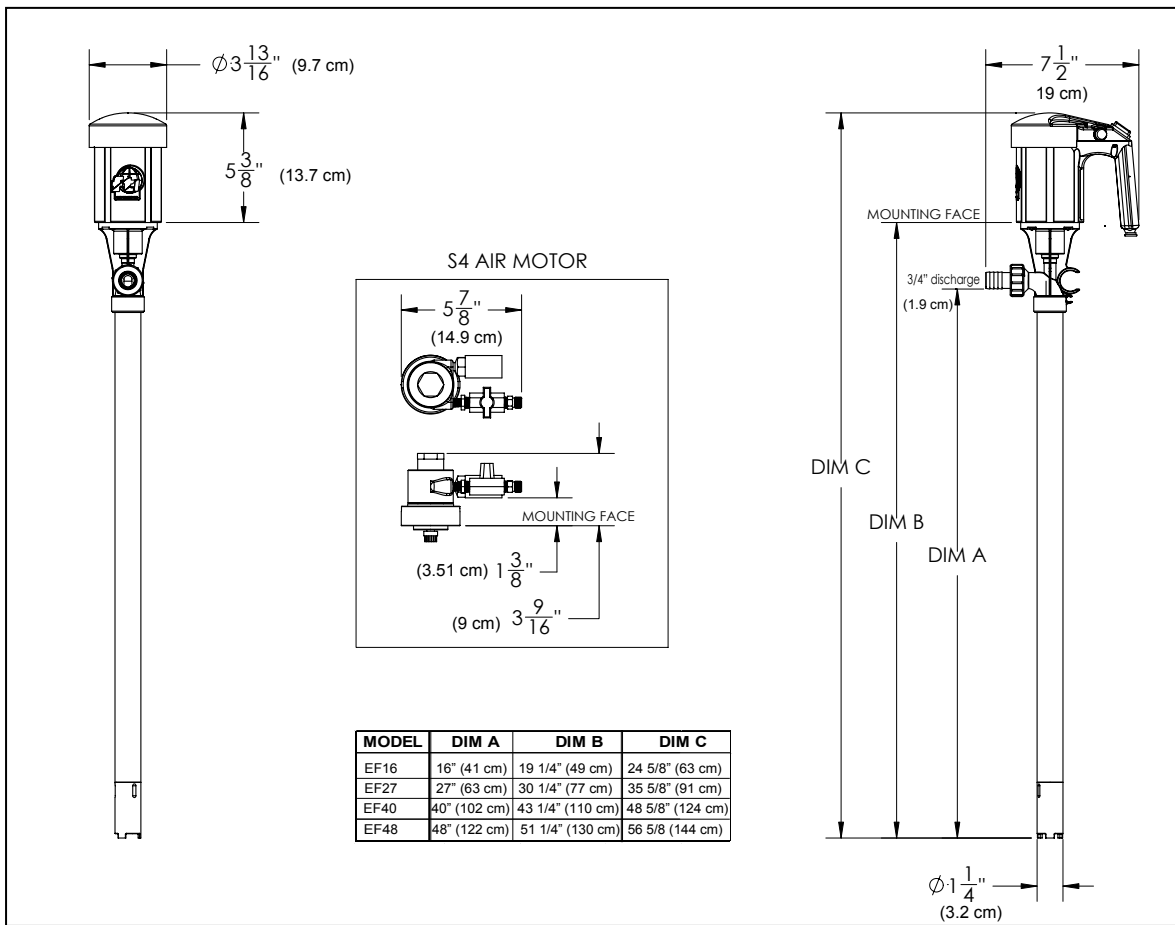
## Motor Specifications

Model	Type	Certifications	Power Requirements	Input	RPM
S1	Splashproof, ENC3, Double Insulated	CSA	115VAC/60 Hz	1/3 Hp, 230 W	8,000 / 14,000
S2	Splashproof, IP24, Double Insulated	CE	230VAC/50-60 Hz	250 W	8,000 / 14,000
S3	Splashproof, IP24, Double Insulated	CE	115VAC/50-60 Hz	230 W	8,000 / 14,000
S4	Air*	CE/ATEX	40 psi @ 27 cfm	1/2 Hp	300 - 11,000

Note: When pumping flammables or combustibles, use an air motor on a stainless steel tube with a static protection kit.

\*An air motor is a non-electrical device, which means the possibility of explosion from igniting flammables or combustibles is reduced. Air motor performance will depend upon user's compressor and system set up.

## Dimensions



## Accessories



Dispensing Nozzle  
Stainless steel /FKM nozzle with  
3/4" hose barb - P/N 107231

Dispensing Nozzle  
Polypropylene/316SS nozzle with  
3/4" hose barb - P/N A101497-1



Discharge Hose -  
Reinforced PVC, 5 ft. length,  
3/4" ID x 1" OD, P/N 107435  
EPDM hose, 8 ft. length, 3/4" ID  
x 1.13" OD, P/N 107446



Bung Adapter -  
Polypropylene, P/N 107425

Bung Adapter  
Stainless Steel, P/N 107426



Static Protection Kit - includes 4 ft.  
synthetic rubber cross-linked poly-  
ethylene grounded hose with brass  
fittings with 3/4" MNPT, ground wire,  
and clamps - P/N 107429



### FINISH THOMPSON INC.

921 Greengarden Road • Erie, PA 16501-1591 U.S.A.  
Ph 814-455-4478 • Fax 814-455-8518  
Email [fti@finishthompson.com](mailto:fti@finishthompson.com) • [www.finishthompson.com](http://www.finishthompson.com)  
U.S. & Canada 1-800-934-9384