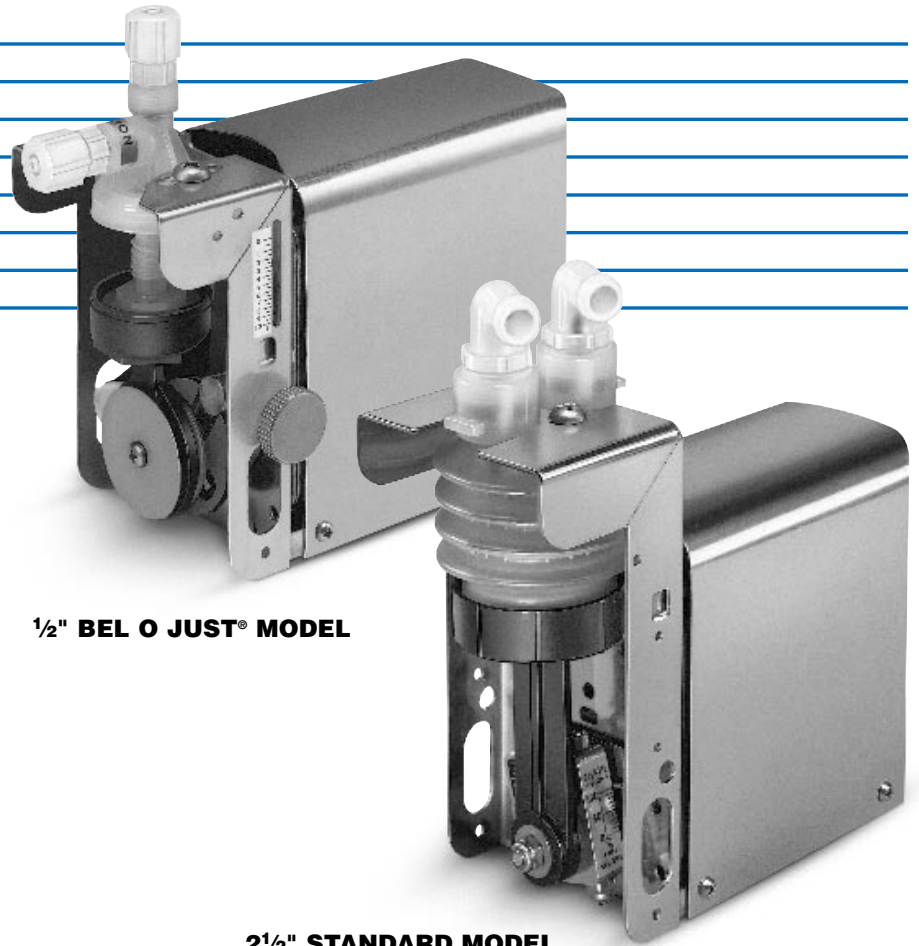


Single Bellows Pumps



1/2" BEL O JUST® MODEL

Standard and BEL O JUST® Models

2 1/2" STANDARD MODEL

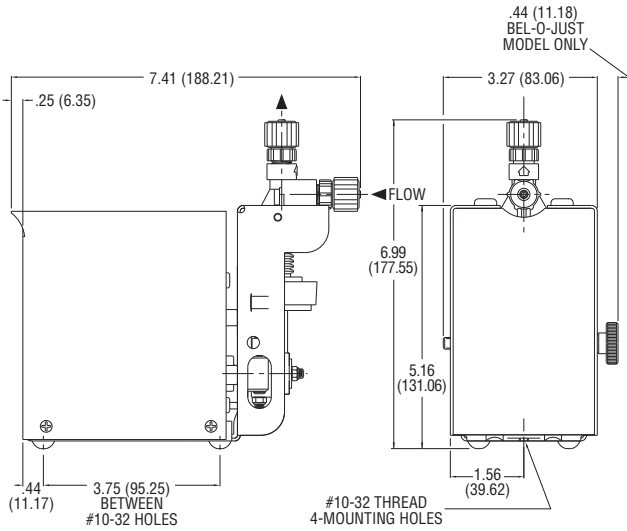
MODEL SPECIFICATIONS

Standard Single Model Number		BEL O JUST® Model Number		Bellows	Discharge Strokes per minute (Motor RPM)		Maximum Flow ml per minute per module		Gallons (Liters) per hour per module		Max. Pressure	Electrical Amps*	Approx. Wt.
120V/60 Hz 110V/50 Hz	240V/60 Hz 220V/50 Hz	120V/60 Hz 110V/50 Hz	240V/60 Hz 220V/50 Hz	Diameter Inches	50 Hz	60 Hz	50 Hz	60 Hz	50 Hz	60 Hz	PSI (kg/cm ²)	120V 60 Hz	lbs.
13960-022	13960-024	14280-006	14280-007	1/2	32.5	39	16.3	19.5	6.2 for 24 hrs. (23.4)	7.4 for 24 hrs. (28.1)	50 (3.7)	1.1	5.5
13960-027	13960-028	14280-009	14280-014	1/2	137	165	68.8	82.5	26.1 for 24 hrs. (99.0)	31.4 for 24 hrs. (118.8)	50 (3.7)	1.1	5.5
13300-007	13300-008	14250-005	14250-006	1	32.5	39	162.5	195	2.6 (9.8)	3.1 (11.7)	40 (2.9)	1.1	5.5
13300-009	13300-010	14250-007	14250-008	1	50	60	250.0	300	4.0 (15.0)	4.8 (18.0)	40 (2.9)	1.3	5.5
13300-045	13300-046	14250-014	14250-015	1	75	90	375.0	450	5.9 (22.5)	7.1 (27.0)	40 (2.9)	1.1	5.5
13300-047	13300-048	14250-016	14250-017	1	137	165	687.5	825	10.9 (41.2)	13.1 (49.5)	20 (1.5)	1.1	5.5
13325-001	13325-002	14251-001	14251-002	1 1/2	32.5	39	341.3	409.5	5.4 (20.5)	6.5 (24.6)	20 (1.5)	1.1	5.5
13325-003	13325-004	14251-003	14251-004	1 1/2	50	60	525.0	630	8.3 (31.5)	10.0 (37.8)	20 (1.5)	1.3	5.5
13325-005	13325-006	14251-005	14251-006	1 1/2	75	90	787.0	945	12.5 (47.2)	15.0 (56.7)	20 (1.5)	1.1	5.5
13325-031	13325-032	14251-007	14251-008	1 1/2	137	165	1443.8	1732.5	22.8 (86.6)	27.5 (103.9)	10 (.73)	1.1	5.5
12950-003	12950-004	N/A	N/A	2 1/2	32.5	39	1787.5	2145	28.3 (107.3)	34.0 (128.7)	5 (.37)	1.1	5.5
N/A	N/A	**15076-003	15076-004	2 1/2	75	90	2062.5	2475	32.6 (123.8)	39.2 (148.5)	5 (.37)	1.1	5.5

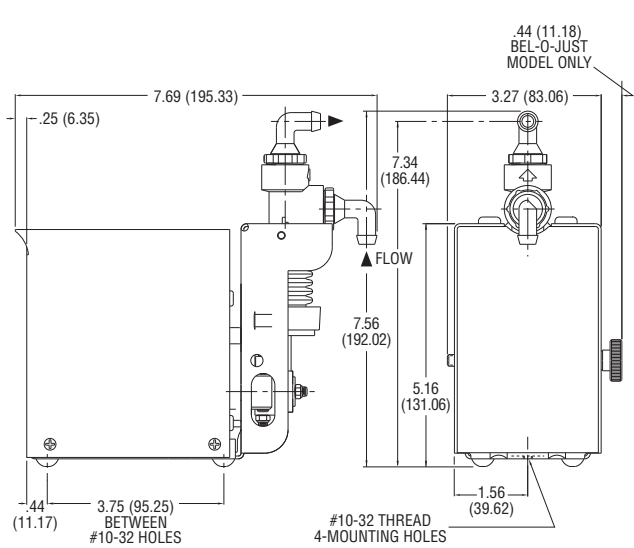
*Amp values for 240V will be approximately 50% of 120V values shown above. **Available in 60 Hz only.

SINGLE BELLOWS - TYPICAL DIMENSIONS

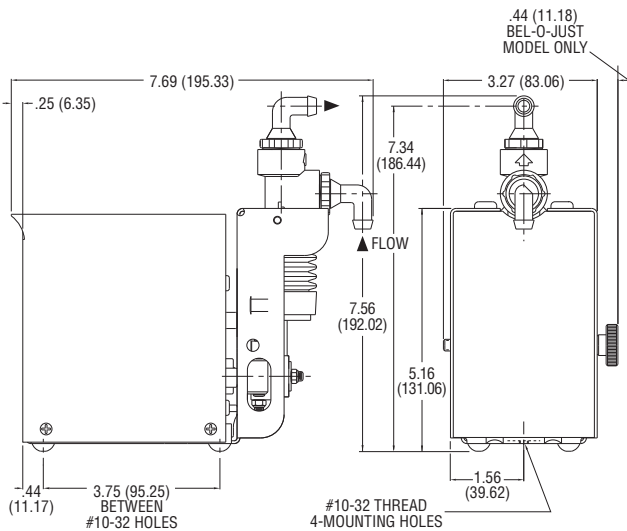
1/2" Model



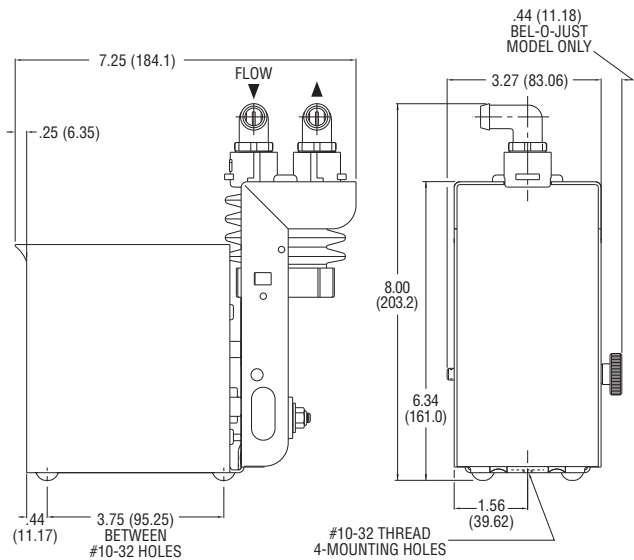
1" Model



1 1/2" Model



2 1/2" Model



Dimensions in Inches (Dimensions in Millimeters)

Order Notes: When ordering a single bellows model, add one "X" code for valve and O-ring material selection and one "T" code for connector selection from the Bellows Part Selection Guide.

Example: 13300-007 (1" bellows model) with Hypalon® poppet valves and O-rings and elbow connectors for 3/8" I.D. tubing would be ordered as 13300-007 X-115 T-008.