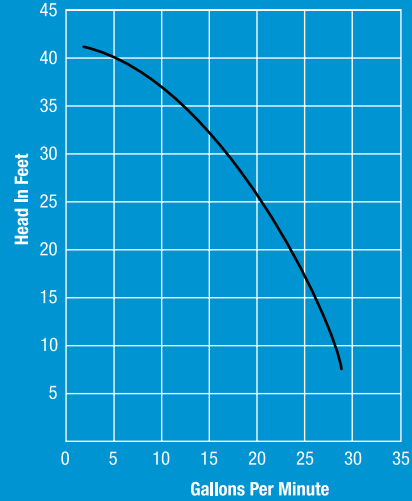




model TE-5.5C-MD
with AC motor



model TE-5.5S-MD



■ TE-5.5C-MD

SERIES 5.5

30 gpm

The 5.5 series pumps are the first in the March product line to employ an involute design with a closed impeller magnet assembly. They can deliver a maximum flow of 30 GPM (110 LPM), and are capable of serving applications with a maximum head of 41 ft. (9m). Able to handle chemicals of all kinds at temperatures up to 190° F (87° C), uses range from icemakers to film processors and silver recovery systems. Units with Kynar® plastic construction can handle strong halogen solutions and certain chromic or sulfuric acid solutions. Other options for wetted materials include glass filled polypropylene, ceramic, Viton®, and 316 stainless steel. Optional bushings, “O” rings and spindle combinations are available.

Drive motors are a 1/5 HP (.149 kw), 3200 rpm, 115-volt single phase air-cooled or a 1/3 HP (.248 kw) 3450 rpm, 115/230-volt single phase or 230/460-volt three-phase totally enclosed, 50/60 Hz. motor. Explosion-proof motors are also available. Standard port configuration is a 1" FPT inlet with a 3/4" MPT outlet.

- ⊗ Other materials and voltages available on special order.
- ⊗ RPM at wide open flow and 0 head, RPM increases as head is increased.
- ◇ Priming reservoir available.

BSP threads available on special order on plastic pumps.

Explosion proof motors available. Carbon bushings available for dry running. Other bushing materials available for various chemical solution. Flanges are available on special order.

ELECTRIC MOTORS

SERIES 5.5		TE-5.5C-MD ◇ W/AC MOTOR	TE-5.5K-MD ◇	TE-5.5K-MD	TE-5.5S-MD
max. flow	gpm	30	30	30	30
	lpm	110	110	110	110
max. head	ft.	40	41	41	41
	m	8.5	9	9	9
inlet		1" FPT	1" FPT	1" FPT	1" FPT
outlet		3/4" MPT	3/4" MPT	3/4" MPT	3/4" MPT
hp		1/5	1/3	1/3	1/3
kw		.149	.248	.248	.248
rpm ⊗	us	3200	3450	3450	3450
	metric	2799	2850	2850	2850
volts ⊗	us	115	115/230	115/230	115/230
			230/460	230/460	230/460
	metric	230	115/230	115/230	115/230
			230/460	230/460	230/460
ph		1	1, 3	1, 3	1, 3
hz		50/60	50/60	50/60	50/60
watts	us	290	400, 455	400, 455	400, 455
	metric	370	300, 336	300, 336	300, 336
amp	us	2.6	3.6/1.8	3.6/1.8	3.6/1.8
	metric	1.7	1.3/6 1.35, 1.26	1.3/6 1.35, 1.26	1.3/6 1.35, 1.26
motor type		AC	TEFC	TEFC	TEFC
electrical connection		Conduit Box	Conduit Box	Conduit Box	Conduit Box
max. int. pressure	psi	50	50	75	200
	bar	3.4	3.4	5	13
max. liquid temp.	°f	190	190	200	250
	°c	87	87	93	121
weight packed	lbs.	15 1/2	34 1/2	35	39
	kg.	7	15.5	16	17.5
materials in contact with solution ⊗		Polypropylene, Ceramic, Viton®	Carbon filled Kynar®, Ceramic, Viton®	316 Stainless Steel, Viton®, Ceramic, Carbon bushing	



MARCH PUMPS

1819 PICKWICK AVE., GLENVIEW, IL 60026-1306, U.S.A
 PHONE: (847) 729-5300 - FAX: (847) 729-7062
 WWW.MARCHPUMP.COM

INSTRUCTIONS & REPAIR PARTS FOR MODELS TE-5.5C-MD, TE-5.5K-MD, AND TE-5.5S-MD



RATINGS AND SPECIFICATIONS														
MODEL NO.	CONNECTORS		ELECTRICAL			GPM AT LISTED HEAD (60 Hz)					PSI GAGE	DIMENSIONS		
	INLET	OUTLET	HP	VOLTS	AMPS	1 FT.	10 FT.	20 FT.	30 FT.	40 FT.		HT.	WD.	LG.
TE-5.5C-MD														
TE-5.5K-MD	1" FPT	3/4" MPT	1/3	115/230	3.6/1.8	27	23	18.2	11.7	1.5	17.5	8 9/16"	7 7/16"	14 7/16"
TE-5.5S-MD														

PUMP CONSTRUCTION & SERVICING

March "Orbital" Magnetic Drive Pumps eliminate the conventional shaft seals found in most pumps. This means that there is no rotating shaft or seal to wear and allow the liquid being pumped to leak out. The only seal in the pump is a stationary Viton "O" ring seal between the front and the rear Housings.

The pump can be serviced with the use of a screwdriver. The only moving part in the pump, other than the motor, is the Impeller-Magnet Assembly, which rotates on a stationary ceramic spindle and up against a ceramic thrust washer. These are the only parts that might wear, and may require replacement. See the Repair Parts List for replacement parts.

On plastic pumps, do not over tighten the 8 Housing Screws (Item 13) or you may crush the plastic Housing bosses. Tighten all screws uniformly.

ELECTRICAL AND OPERATION

The standard pump has a TEFC motor, 115/230 volts, 60/50 Hz, 1 phase, 3450 r.p.m. rated as continuous duty.

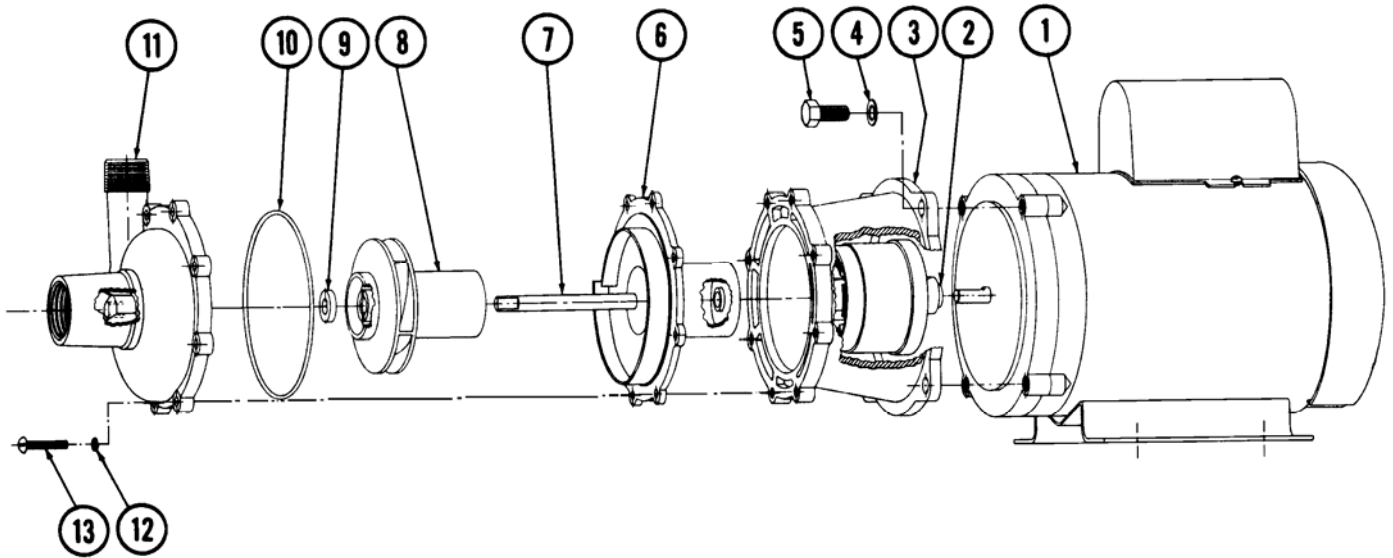
A junction box is located on the side of the motor for the electrical hook up. The wiring instructions are located on the motor label or on the junction box cover. The motor has U.L. yellow card recognition.

We rely on the liquid being pumped to lubricate the Impeller-Magnet assembly bushing spinning on the stationary ceramic spindle. If the pump is run dry for longer than 30 seconds, the Impeller bushing may "freeze" onto the spindle. The direction of motor rotation should be clockwise looking at the inlet of the pump. Other bushing materials are available for "dry" running protection.

Totally enclosed explosion proof and special voltage motors are available upon special order.

PUMP MATERIALS

The pump components in contact with the liquid are polypropylene, Kynar or type 316 stainless steel. The "O" ring gasket is Viton. The spindle shaft and Thrust Washer are ceramic. The stainless Impeller has a Carbon bushing. Other materials are available on special order.



MODEL TE-5.5C-MD, TE-5.5K-MD, AND TE-5.5S-MD REPAIR PARTS LIST			
ITEM	DESCRIPTION	QTY.	PART NUMBER
1	Motor, 115/230 Volt, 1 Phase	1	0151-0015-1000
2	Drive Magnet Assembly	1	0151-0061-0100
3	Motor Connecting Bracket	1	0151-0014-0100
4	3/8 I.D. x 5/8 O.D. Stainless Washer	4	0155-0019-1000
5	3/8-16 x 3/4 Long Screw	4	0155-0017-1000
6A	Rear Housing (Polypropylene)	1	0151-0028-0100
6B	Rear Housing (Kynar)	1	0151-0045-0100
6C	Rear Housing, Type 316 Stainless	1	0151-0003-0000
7	Impeller Shaft, Ceramic	1	0153-0007-1000
8A	Impeller Assembly (Polypropylene)	1	0151-0029-0500
8B	Impeller Assembly (Kynar)	1	0151-0046-0300
8C	Impeller Ass'y., Type 316 S.S. w/Carbon Bushing	1	0151-0001-0400
9	Thrust Washer, Ceramic	1	0155-0009-1000
10	4-1/4 I.D. x 3/32 Thick "O" Ring, Viton	1	0153-0015-1000
11A	Pump Housing (Polypropylene)	1	0151-0027-1000
11B	Pump Housing (Kynar)	1	0151-0044-1000
11C	Pump Housing, Type 316 Stainless	1	0151-0002-0000
12	#10 Stainless Lock Washer (Stainless Pump Only)	8	0151-0016-1000
13	#10-32 x 1 Long Stainless Screw	8	0135-0180-1000

Contact factory for other materials and/or parts not listed.

LIMITED WARRANTY

March pumps are guaranteed only against defects in workmanship or materials for a period of one year from date of manufacture pumping water. On all other solutions, contact the factory for application assistance. March Pump Application Worksheet 750-130-10 is available for additional warranty information.



1819 PICKWICK AVE., GLENVIEW, IL 60026-1306, U.S.A
 PHONE: (847) 729-5300 · FAX: (847) 729-7062 · www.marchpump.com

0151-0026-1000 R6