
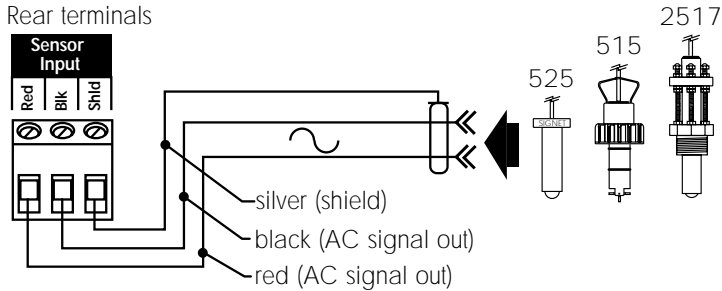


CAUTION!
Follow instructions carefully to avoid personal injury.

 = Caution, refer to instruction manual for more details

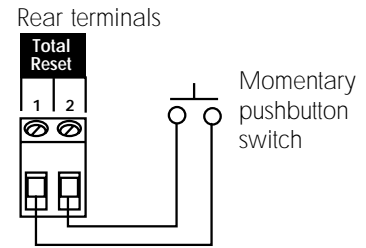
1. Compatible Sensor Wiring



Technical Notes:

- Use 2-conductor shielded cable for sensor cable splices up to 60 m (200 ft) max.
- Maintain cable shield through cable splice.
- Route sensor cable away from AC power lines.

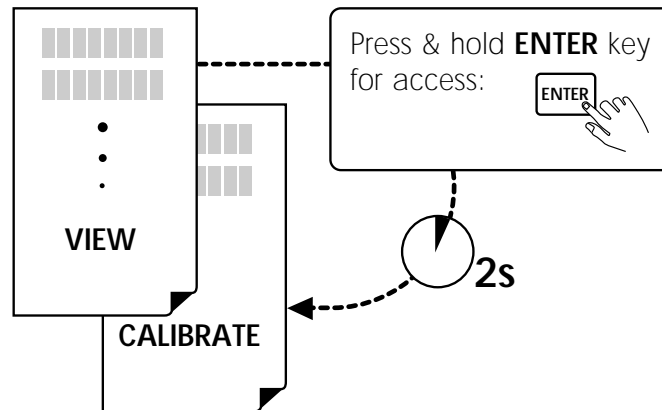
2. Remote Totalizer Reset Wiring



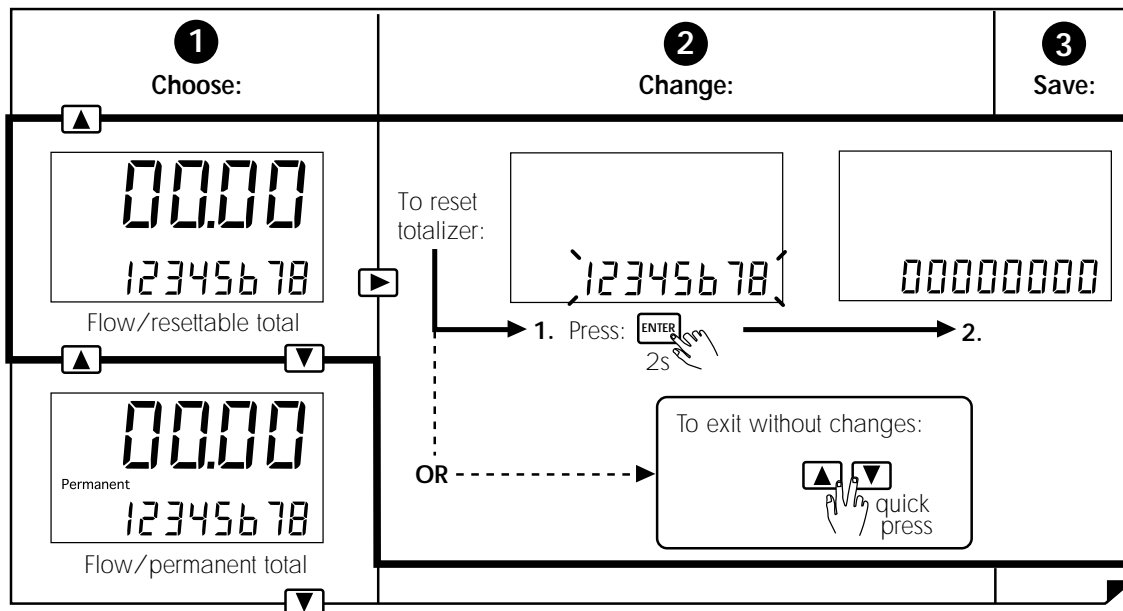
Technical Notes:

- Use 2-conductor **twisted-pair** cable for reset lines up to 30 m (100 ft) max.
- Route reset cable away from AC power lines.

3. Functions



4. VIEW (example)



• Resettable totalizer can be reset via front keypad or by remote switch contact closure (section 2).

• Permanent totalizer cannot be reset

5. CALIBRATE (example)

- - - -

KEY

Press buttons in sequence to continue,

- - - - dashes disappear during key code entry.

1 Choose:	2 Change:	3 Save:
 <div style="border: 1px solid black; padding: 5px; text-align: center;"> Flow KFactor 600 </div> Flow K-factor	<div style="border: 1px solid black; padding: 5px; text-align: center;"> Flow KFactor 00600 </div> Enter K-factor	<div style="border: 1px solid black; padding: 5px; text-align: center;"> Flow KFactor 174.67 </div>
 <div style="border: 1px solid black; padding: 5px; text-align: center;"> Total KFactor 1000 </div> Total K-factor	<div style="border: 1px solid black; padding: 5px; text-align: center;"> Total KFactor 01000 </div> Enter K-factor	<div style="border: 1px solid black; padding: 5px; text-align: center;"> Total KFactor 174.67 </div>
 <div style="border: 1px solid black; padding: 5px; text-align: center;"> Min </div> Flow timebase	<div style="border: 1px solid black; padding: 5px; text-align: center;"> Sec Min Hr Day </div> Select timebase	<div style="border: 1px solid black; padding: 5px; text-align: center;"> Sec Min Hr Day </div>
 <div style="border: 1px solid black; padding: 5px; text-align: center;"> - - - - . </div> Display decimal	<div style="border: 1px solid black; padding: 5px; text-align: center;"> - - - - . : : </div> Select position	<div style="border: 1px solid black; padding: 5px; text-align: center;"> - - - - . : : </div>
 <div style="border: 1px solid black; padding: 5px; text-align: center;"> d 15P SPEED Lo </div> Display update	<div style="border: 1px solid black; padding: 5px; text-align: center;"> d 15P SPEED Lo </div> Lo = 4s, Hi = 2s	<div style="border: 1px solid black; padding: 5px; text-align: center;"> d 15P SPEED Hi </div>
To return to VIEW: quick press	To restore original value: quick press	<div style="border: 1px solid black; padding: 5px; text-align: center;"> ENTER </div>

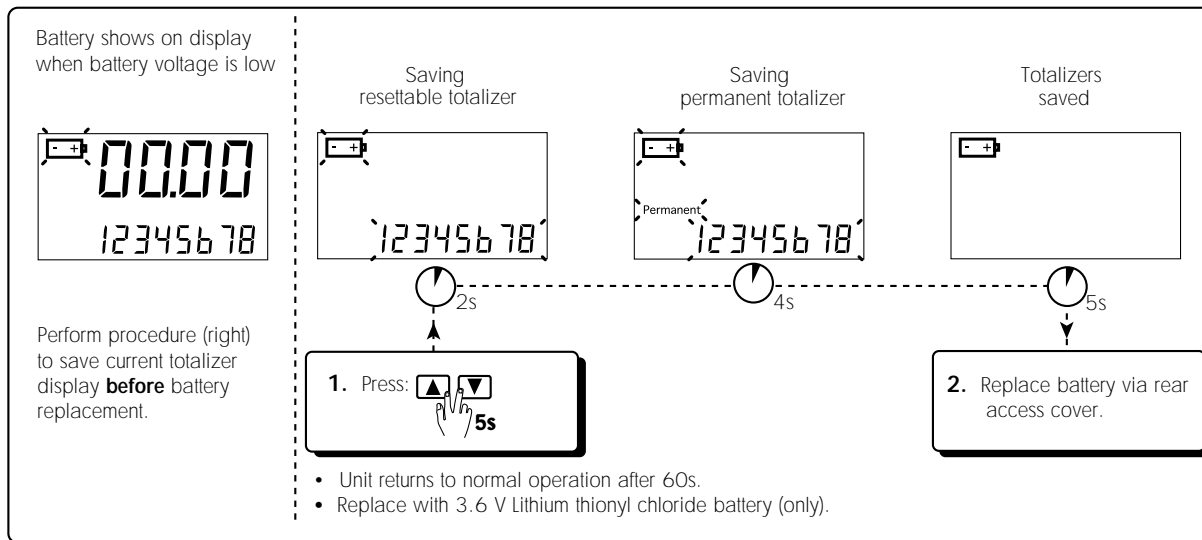
- Sets flow display K-factor: 00.001 to 99999. (see technical notes below)
- Sets totalizer display K-factor: 00.001 to 99999. (see technical notes below)
- Selects display timebase: Hours, minutes, seconds, or days
- Selects display decimal: - - - - . to - - - - . : : - - - -
- Selects display update time: "Lo" = 4s, "Hi" = 2s, choose "Lo" for maximum battery life.

Technical Notes:

- **Flow and Total K-factors:** These K-factor settings represent the number of pulses generated by the +GF+ SIGNET flow sensor for each engineering unit of fluid measured (published in flow sensor manual).

6. Totalizer Backup Procedure

The totalizer value can be stored in permanent memory to prevent loss before removing the battery.



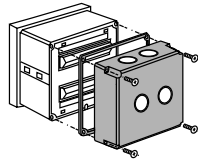
CAUTION: DISPOSE OF BATTERY PROPERLY!

Consult local authorities for proper battery disposal regulations.

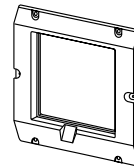
7. Parts and Accessories



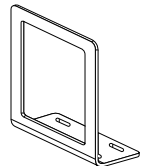
Replacement battery
#7400-0010
(code 198 829 024)



Splashproof rear cover
#3-5000.395
(code 198 840 227)



5 x 5 inch adapter plate for
+GF+ Signet retrofit
#3-5000.399
(code 198 840 224)



Optional surface mount
bracket #3-5000.598
(code 198 840 225)

- Front snap-on bezel, #3-5000.525 (code 198 840 226)
- Assorted flow unit/multiplier decals, #3-5100.611 (code 198 840 229)
- Instruction sheet, #3-5100.090-1 (code 198 869 913)

8. Specifications

General

Sensor compatibility: +GF+ SIGNET 515, 525, 2517 flow sensors only

Accuracy: $\pm 0.5\%$ of reading

Enclosure:

- Rating: NEMA 4X/IP65 front
- Dimensions: 1/4 DIN, 96 x 96 x 88 mm (3.8 x 3.8 x 3.5 in.)
- Case material: ABS plastic
- Keypad material: Sealed 4-key silicone rubber
- Weight: Approximately 400 g (14 oz.)

Display:

- LCD type: 4-digit upper, 8-digit lower
- Contrast: Automatically adjusts
- Low battery indication

Totalizers:

- 8-digit resettable
- 8-digit non-resettable

Environmental

Operating temp.: -5 to 65 °C (23 to 149 °F)

Storage temp.: -15 to 80 °C (5 to 176 °F)

Relative humidity: 0 to 95%, non-condensing

Quality Standards

- CSA, CE, UL listed
- Manufactured under ISO 9001

Electrical

Power:

- Internal 3.6 V Lithium thionyl chloride battery, 4.5 Ahr

Battery life:

- 4 years nominal

Totalizer reset:

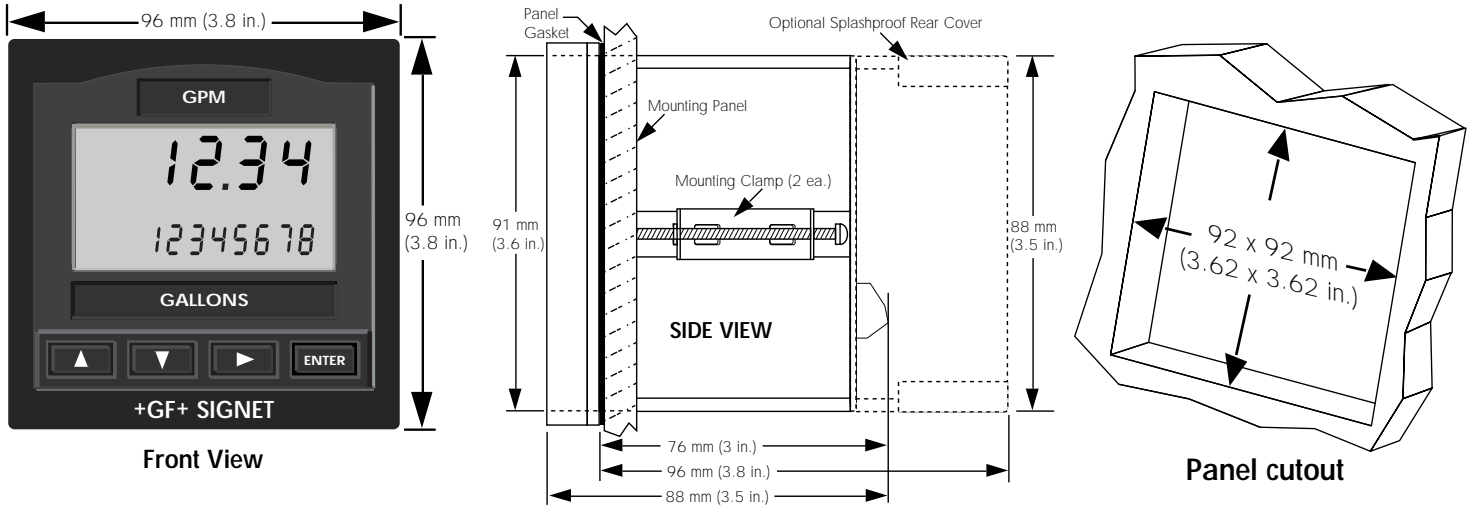
- Front keypad or external contact closure, 30 m (100 ft) max. cable length

Noise immunity: EN50082-2

Noise emissions: EN55011

Safety: EN61010-1

Dimensions



9. Troubleshooting

Setup Menu Messages

Display:	Cause:	Solution:
--- -- --	1. Display overrange 2. Display timebase too large	1. Move display decimal to right in CALIBRATE menu 2. Change flow timebase (Seconds, Minutes, Hours, Days) in CALIBRATE menu to a smaller value (e.g. from Days to Minutes)

10. Maintenance

Clean the instrument case and front panel with a soft cotton cloth and mild liquid soap solution.

Provided by KTH Sales, Inc.

www.KTH Sales.com ph: 219-736-0060

8574 Louisiana Place

Merrillville, Indiana 46410 -- USA

Signet Scientific Company, 3401 Aerojet Avenue, El Monte, CA 91731-2882 U.S.A.,

